

C O N T E N T S

1 Skin Booster

Rejuran | Exosome | Juvelook

2 EBD (Energy-Based Devices)

Ulthera | ThermageFLX | InMode | Double Tight

3 Scalp Exosome Therapy

AI Diagnosis | Exosome | Light Therapy

4 Thread Lifting

Elasticum | Silhouette Soft | Mint Lift | Wonder Lift

5 Premium Anti-Aging & Contouring Procedures

EasyCut | GV Laser | Filler | Botox

6 Wellness & Recovery Care

Gold | Purple | Red IV Therapy



01 ——— SKIN BOOSTER



SKIN BOOSTER

WHAT IS SKIN BOOSTER?

A treatment that injects active ingredients into the skin to improve various skin concerns. It promotes skin regeneration and is effective for brightening, hydration, wrinkle reduction, and improved elasticity. It delivers moisture and nutrients deep into the skin, fundamentally improving skin condition.

KEY INGREDIENT

Hyaluronic Acid (HA), Polydeoxyribonucleotide (PDRN),
Exosome, Polynucleotide (PN)

NOTES

Mild pain and swelling may occur after treatment but typically disappear within 2~3 days.
Washing and makeup are allowed on the same day, but avoid strong stimulation.



01 — SKIN BOOSTER

SKIN BOOSTER

Rejuran

Balancing · Regenerating · Nourishing

Best-seller for skin regeneration using salmon-derived PN.
Restores moisture-oil balance
and enhances skin elasticity and nutrition.



Stem Cell Exosome

Regeneration · Clarifying

Next-generation skin booster ideal for troubled skin
and scar improvement. Improves texture, hydration.
Derived from umbilical cord stem cells.



Juvelook / Juvelook Volume

Collagen · Plumping


Improves skin texture, tone, hydration, fine lines, and scars.
Juvelook Volume is ideal for natural volume
without fillers or fat grafting.



SKIN BOOSTER



02 ————— EBD LIFTING



EBD (Energy-Based Devices)

WHAT IS EBD?

Non-surgical lifting solutions that use energy-based devices to improve skin quality and facial contours.

ULTRASOUND VS. RF

Different tissue layers respond based on target depth

Ultrasound ▶ Targets deep dermis, Subcutaneous fat, SMAS

RF(radiofrequency) ▶ Primarily targets dermis

RECOMMENDED FOR

- ▶ Ulthera - For sagging skin, double chin, facial contouring
- ▶ Thermage - For skin with little fat; improves elasticity, fine lines, pores, texture, and tone



02 ————— EBD LIFTING

EBD

Ulthera

Lifting • Firming

DeepSEE™ tech enables precise targeting.
Stimulates collagen synthesis from dermis to SMAS layer.



Thermage FLX

Smoothing • Refining

RF for dermal tightening. Effective for elasticity and fine lines.



InMode

Slimming • Firming

Reduces fat cells and boosts collagen synthesis.



Double Tight

Lifting • Smoothing

Combines microneedle RF with skin booster injection
for improved skin tightening and texture.



EBD LIFTING



SCALP 03 – EXOSOME THERAPY

SCALP EXOSOME THERAPY

WHAT IS SCALP EXOSOME THERAPY?

Uses AI-based diagnosis system to analyze scalp, follicles,
and hair condition for customized treatment.

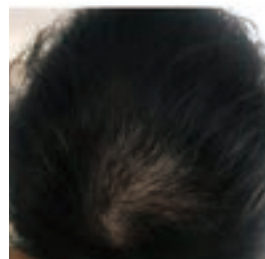
Exosomes derived from umbilical cord stem cells are applied to the scalp.

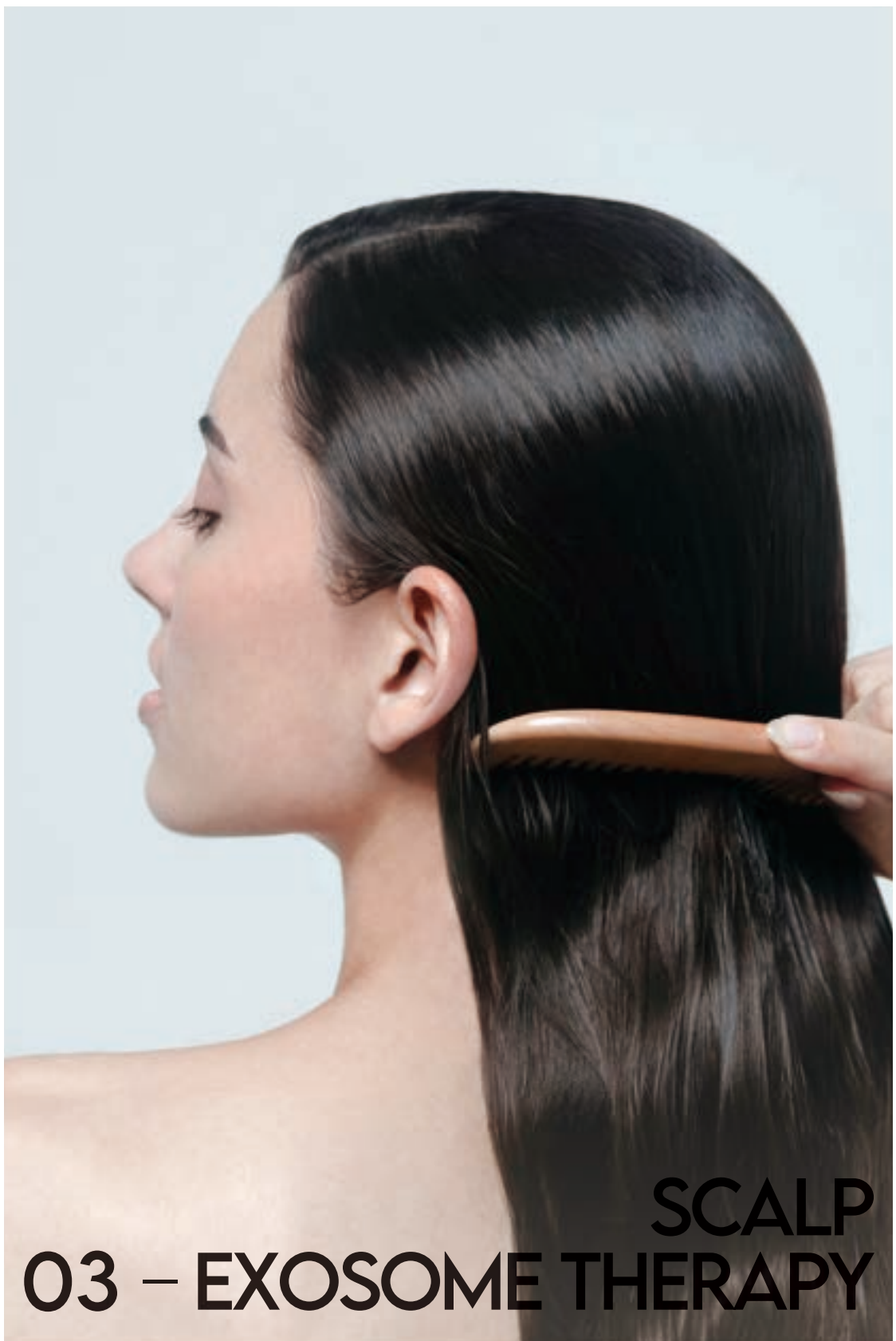
CAUSES OF HAIR LOSS

Genetics, stress, nutrition deficiency, hormonal changes,
scalp inflammation, poor lifestyle habits.

TREATMENT BENEFITS

Follicle regeneration
strengthened scalp barrier
hair loss prevention
improved hair thickness





SCALP 03 – EXOSOME THERAPY

SCALP EXOSOME THERAPY

STEP 01. AI DIAGNOSIS

Scans and analyzes 11 indicators to develop a treatment plan.



STEP 02. HIGH-PURITY EXOSOMES

99.5% stem cell culture fluid from umbilical cord blood.



STEP 03. PRECISE INJECTION

Uses ReH MTS and cold plasma for optimal delivery and absorption of exosomes.



STEP 04. LIGHT THERAPY

Uses SmartLux for hair and scalp health.



SCALP EXOSOME



04 — THREAD LIFTING



THREAD LIFTING

WHAT IS THREAD LIFTING?

A treatment that lifts sagging skin using inserted threads.
It provides immediate lifting effects and is effective for nasolabial folds, sagging cheeks, and double chin.

NOTES

Avoid facial massages or strong facial movements for about a month.
Bruising may occur but typically fades in 1~2 weeks.



04 — THREAD LIFTING

THREAD LIFTING

Elasticum

High Elasticity · Non-Dissolvable

Uses non-dissolvable, biocompatible bands for semi-permanent results with minimal tissue damage.



Silhouette Soft

Plumping · Collagen Stimulation

Provides lifting and volume redistribution with 360° cone threads. Promotes collagen synthesis and leaves no residue.



Mint Lift

Firm Anchoring · Smoothing

Cost-effective. Uses 3D barbs for strong lifting. Made of PDO.



Wonder Lift

Smooth Skin Finish

Multi-cog design gives triple effect. Smooth finish with PDO material.



THREAD LIFTING



05 — ANTI-AGING & CONTOURING

PREMIUM ANTI-AGING & CONTOURING PROCEDURES

EasyCut

Facial Sculpting

Non-surgical contouring that targets only unwanted volume.



GV Laser

Tone Correction • Smoothing

Treats pigmentation, boosts collagen synthesis and improves skin texture.



Filler

Plumping

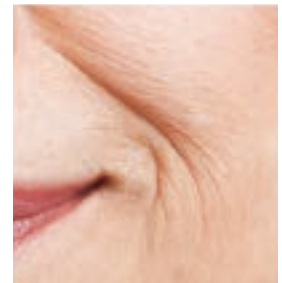
Adds volume to desired areas such as nasolabial folds, forehead, nose, lips. (Main ingredient : Hyaluronic Acid)



Botox

Smoothing • Muscle Relaxing

Reduces wrinkles and muscle activity for smoother expressions.





06 ——— WELLNESS & RECOVERY



WELLNESS & RECOVERY CARE

WHAT IS WELLNESS&RECOVERY CARE?

Delivers essential nutrients intravenously
for fatigue recovery, immune boost, and hydration.
Enhances absorption and overall body condition.

MAIN INGREDIENT

- ▶ Amino Acid Solution - Essential amino acids
- ▶ Lipotion - Fat reduction, whitening, and improved elasticity
- ▶ Alima (Garlic) - Fatigue recovery and liver support
- ▶ Glutathione - Antioxidant, detoxification and whitening

NOTES

IV therapy frequency should be adjusted based on the formulation and individual health.

For fatigue recovery or skin treatments, once every 1–2 weeks is typical;
for immune support, monthly sessions are recommended.



06

WELLNESS
& RECOVERY

WELLNESS & RECOVERY CARE

Gold IV

Anti-Aging • Aesthetic Care

Ultimate anti-aging therapy with beauty-enhancing effects.



Purple IV

Antioxidant • Immunity

Supports overall energy and immune health.



Red IV

Swelling Control • Recovery

Ideal post-surgery or for daily fatigue relief.





WANNABE
PLASTIC SURGERY